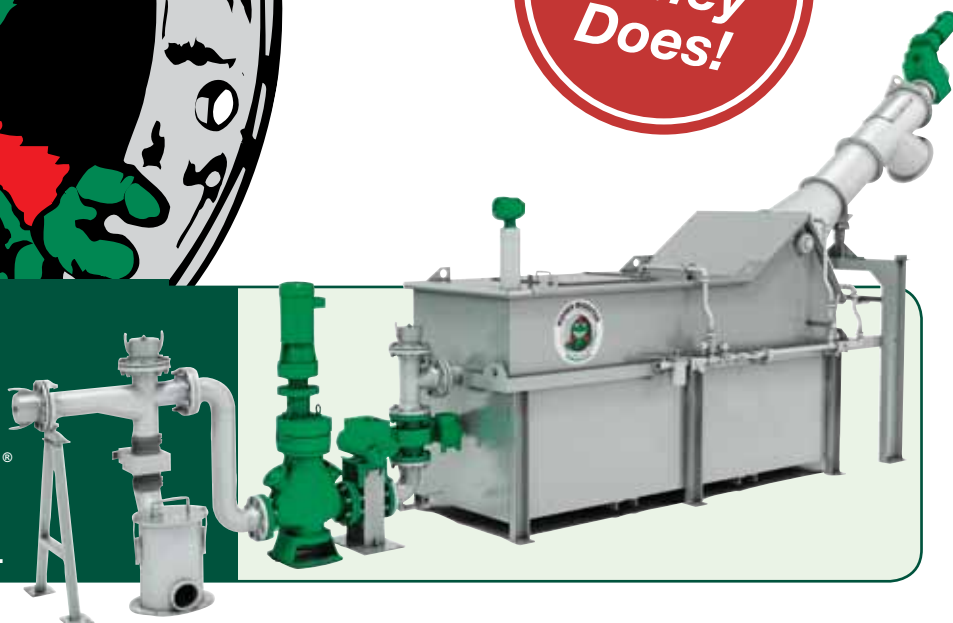




**This
Honey
Does!**

Honey Monster®

Septage Receiving System



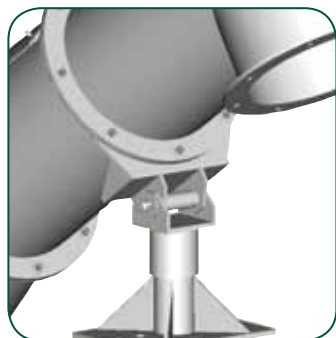
Overview

The automated Honey Monster septage receiving system, based on our proven Auger Monster® screen, allows cleaner handling of septage truck waste by reducing and separating unwanted solids such as rocks, rags, clothing, plastics and other troublesome trash.

The unique combination of grinding, solids removal, washing and dewatering allows a typical septage truck to unload in 5 to 15 minutes. The system is completely enclosed to ensure safety, vector control and to capture foul odors.

MonsterTrack™

The optional 'MonsterTrack' metering and control system uses a flow meter to track septage and provide accurate billing data for the facility and a receipt for the hauler.



Exclusive tilt and swivel auger.



Track loads with MonsterTrack!

Features & Benefits

Advanced Screening and Dewatering

- Auger Monster screen with 6mm perforations removes unwanted solids and trash
- Perf screen captures far more than bar screens
- Patented dual compartment compaction zone provides significant additional dewatering

Easy Access, Pivoted Auger

- The auger is mounted to a pivot support for easy inspections and removal
- A forklift or crane can lift and swivel the screening trough and auger out of the tank

Dual Shafted Grinder

- Muffin Monster® grinder maximizes surface area of solids for better washing and compacting

Triple-manifold Wash Water System

- Washes soft organics off of captured solids
- Ensures optimal throughput while minimizing odors

High Level Ultrasonic Sensor

- Regulates plug valve for optimum performance
- Baffles prevent overflow conditions

Optional 'MonsterTrack' System

- Records driver information and measures flow data
- PIN or card access for security
- Printed transaction receipts
- Data stored on compact flash card
- Ethernet/SCADA connection capable



JWC
Environmental®

Trust Monster Quality™

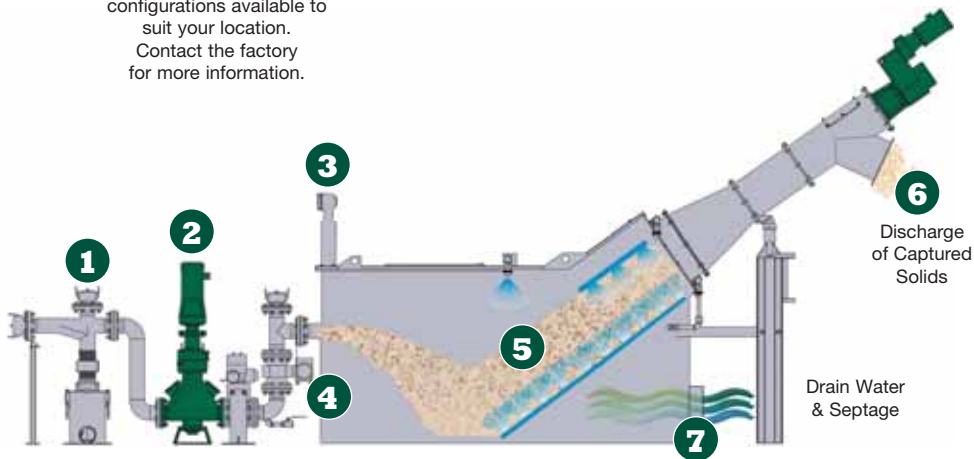
www.jwce.com



Honey Monster®

Septage Receiving System

Multiple piping configurations available to suit your location. Contact the factory for more information.



Operation

- 1) Haulers connect to the cam lock inlet and start the flow of septage which first passes through the rock trap.
- 2) Muffin Monster grinds-up solids.
- 3) Ultrasonic level sensor and modulating plug valve regulate flow.
- 4) If the 'MonsterTrack' option is installed, the flow meter sends data to the controller.
- 5) Septage and solids now enter the perf screening trough. Spray wash cleans the solids and keeps the screen clear.
- 6) The unwanted solids are captured by the inclined auger screen and transported to the compaction zone for additional dewatering before being discharged.
- 7) The screened septage now safely flows into the wastewater treatment plant.

Options

- Macho Monster grinder for higher-flows
- 150mm inlet and pipeline
- Cold weather protection system
- Discharge bagger
- pH and conductivity sensing loop
- 316 stainless steel pipe and tank

Materials of Construction

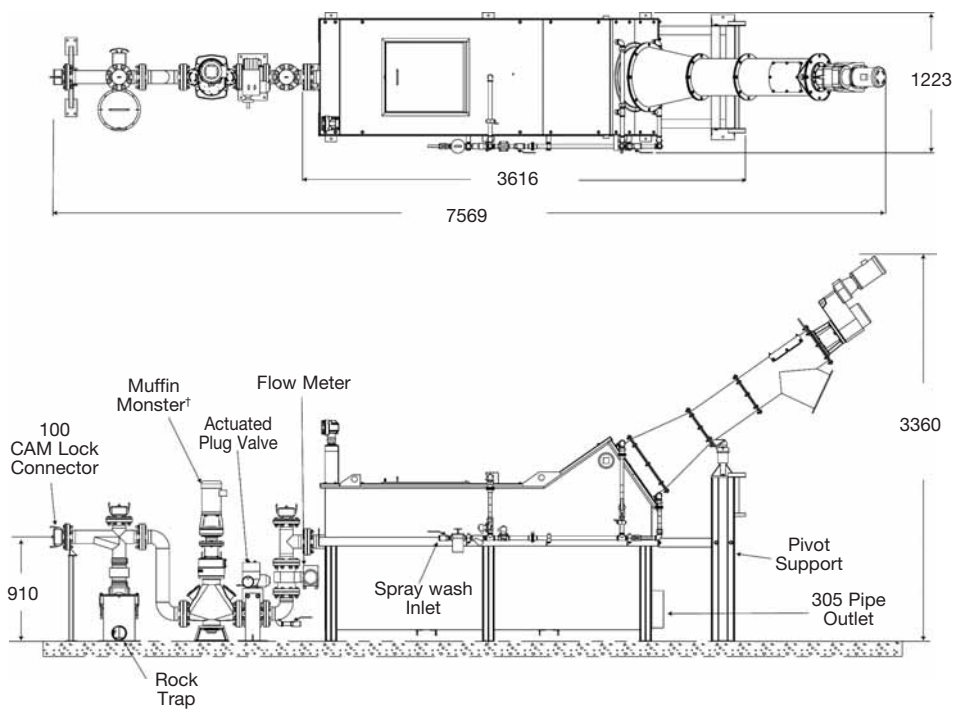
Tank/piping/support: 304 stainless steel

Auger Assembly: Casings and trough are 304ss; rotor is 480mm Ø alloy steel

Grinder Housing: ductile iron housings ASTM A536-77

Cutters: 8620 carburized alloy steel, hardened to 60-65 Rockwell C

Mechanical Seal Faces: Tungsten carbide



Model	Screen Diameter	Auger Motor	Screenings Capacities	Maximum Flow
SRS3235-XE	480mm	1.5 kW	2.55 m ³ /h	227 m ³ /h*

[†] 30004T-1204 uses standard 4kW motor.

*Flow rated with clean water, site results will vary depending on solids content.



Headquarters
290 Paularino Ave.
Costa Mesa, CA 92626 USA
Phone: +949-833-3888
Fax: +949-833-8858
jwce@jwce.com

www.jwce.com